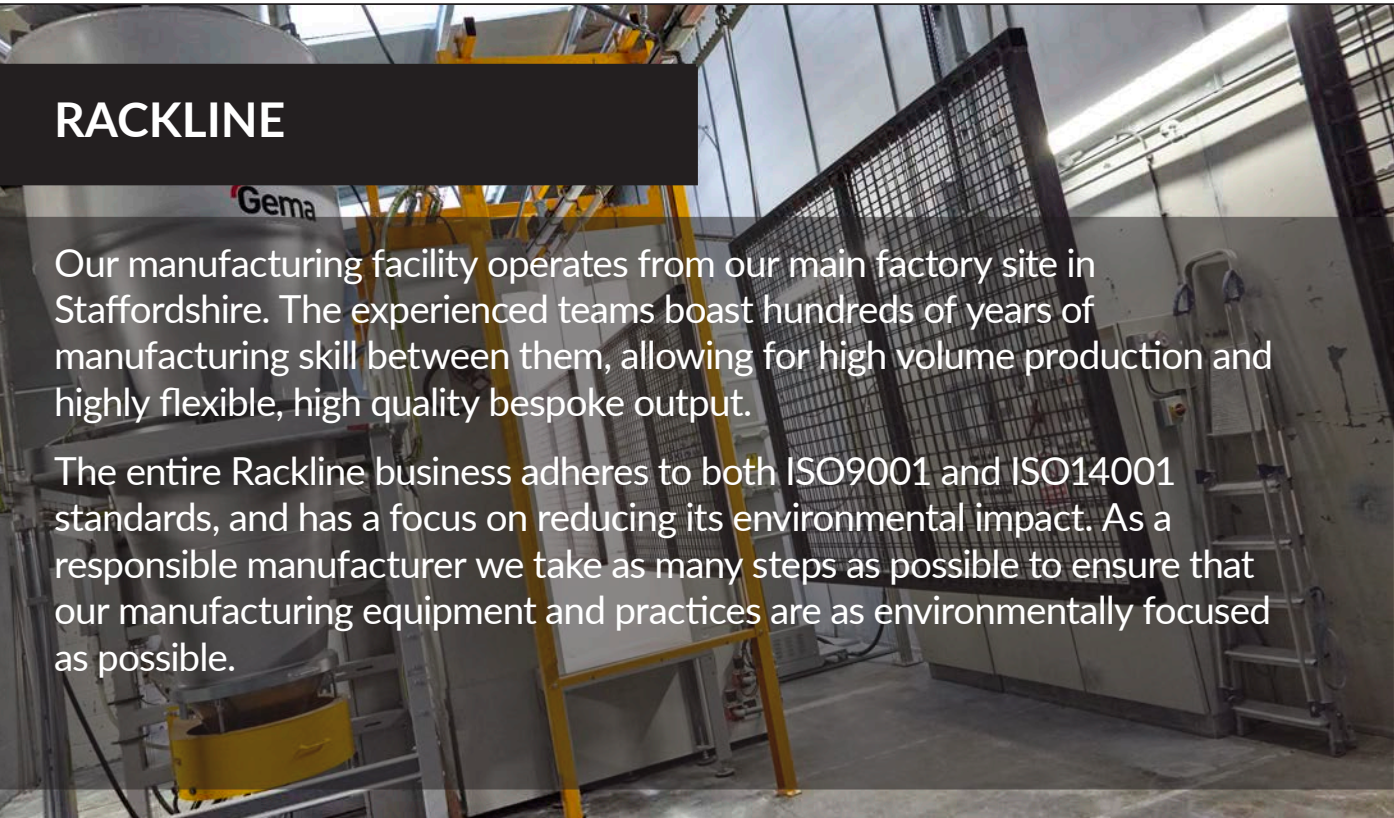


RACKLINE
STORAGE SYSTEMS

Archive Storage



With over 40 years experience in the design, manufacture and install of a huge range of storage solutions for Archives, Rackline are the perfect partner to maximise your space.



RACKLINE

Our manufacturing facility operates from our main factory site in Staffordshire. The experienced teams boast hundreds of years of manufacturing skill between them, allowing for high volume production and highly flexible, high quality bespoke output.

The entire Rackline business adheres to both ISO9001 and ISO14001 standards, and has a focus on reducing its environmental impact. As a responsible manufacturer we take as many steps as possible to ensure that our manufacturing equipment and practices are as environmentally focused as possible.

ACCREDITATIONS AND MEMBERSHIPS



HOW TO FIND US



Rackline Head Office
Oak Tree Lane
Talke,
Talke Pits,
Stoke-on-Trent,
ST7 1RX

Tel: 01782 770 144

To find out more about any of these talk to your local sales representative.

ARCHIVE STORAGE SOLUTIONS

Rackline are the experts in the creation of the perfect archive storage areas, having implemented solutions for huge cross section of sectors since 1984. Together with a range of standard storage products, Rackline's teams can also support you with the development of truly bespoke, tailored solutions to meet the individual needs of your archive and items.

Static Shelving:

Rackline provides a cross section of static shelving solutions that are perfect for archives. From strong steel shelving such as our Speedrax for large items, through to our single and double skin options for smaller items, files or document storage.



Mobile Storage Solutions:

A speciality of Rackline, our mobile systems enable the safe storage of even heavy and cumbersome items. Our mobile systems enable you to save 70% of the space compared to regular shelving. Truly make the most out of your space, and safely store your archive items.



Industrial Shelving:

For areas where stronger shelving is required, our industrial solutions provide storage for even the most cumbersome of items. Talk to us about our cantilever racking, or long span options.



Cages and Secure Areas:

Rackline are the manufacturer, so we make the storage you need to fit your stock items and space. One example are our cages, complete with internal shelving where required. These are perfect for protecting your valuable items, restricting access and keeping them safe.



Secure Cabinets

For high value, rare or confidential items, Rackline's lockable cabinets are designed to protect them and restrict access. With secure locks and reinforced steel adaptations they retain accessibility while keeping these items safe.



Racking:

Rackline isn't limited to static and mobile shelving, we also provide the latest industrial solutions. These are perfect for warehouse environments, or where larger and heavier items needs storage.



STATIC SHELVING

The Rackline teams manufacture a range of static shelving solutions. These are designed to be fitted in a set position and secured in place to provide permanence, structure and stability.

Our static solutions are often chosen to create efficient high-density storage environments within Archives.

Rackline static systems and options can be manufactured to meet your individual requirements, and even combined with our mobile bases to maximise your archive areas.

DOUBLE SKIN

Proform and ProLibero shelving solutions have been designed for the archive environment with total protection in mind. They are robust, featuring an incredibly strong 'box' section upright. This is manufactured as a double-skin panel with two sections spot-welded together.

These systems are cleverly designed to provide clear access, while protecting the shelf contents. They have no protrusions, edges or raised seams which makes them perfect for the storage of even precious manuscripts and rare books. It also means that when shelves are pitched asymmetrically, the shelf clips will not protrude into the adjoining aperture.

Our double skinned shelving is equally at home being static or configured as a mobile system.

SINGLE SKIN

The Rackline Profile single-skin shelving consists of a panel with a double-form rear section. A closed-wall steel shelving system, the intermediate uprights are designed to support the shelves in adjoining bays.

This shelving is perfect for the storage of archive boxes, files and miscellaneous items.

These shelves have no sharp edges on the uprights and tight manufacturing tolerances remove the potential of items migrating from bay to bay or becoming trapped behind upright posts.

All shelves are interchangeable with clips and a wide range of accessories are available.

Profile single skin shelving can be powder coated to your required colour to fit in with your environment. This finish is far harder wearing than paint and UV resistant, ensuring many years of service.

Profile shelving is tested to: BS EN 14073-2:2004.

OPEN POST

Prospan shelving is designed for the archive environment to bridge the gap between Profile, Proform and our industrial systems.

Prospan can be used in large archives and light industrial applications where heights can be maximised.

Prospan is our take on longspan, but cleverly designed to retain a more elegant style that can sometimes be lost with the traditional, more industrial aesthetic associated with longspan shelving.

Prospan shelving can be specified in numerous lengths between 1200mm and 1600mm wide and heights of up to 4500mm.

Perfect for even large, heavy items, this shelving boasts a capacity load per shelf (spread) of up to 125kg.

MOBILE SHELVING

Rackline's mobile storage systems are the perfect solutions for increasing your storage capacity while reducing your storage footprint.

No matter the term you use, mobile shelving, mobile aisle shelving, compactus, roller racking, or rolling stack we offer a range of mobile storage systems to suit your archive storage.

INCREASE YOUR SPACE BY 70%

MONOTRAK

Monotrak is a high density mobile shelving system that operates on a single surface mounted guide track. This track is designed to be non-trip and the clever design eliminates the use of 'infill floors' and the access ramps used by other brands.

The guide rails are easy to install, and produce little residual damage to the floor. This feature makes this system quick to install and easy to relocate if necessary.

The slim carriage profiles and durable design results in load capacities of up to 3000kg across lengths of up to 5 metres. Monotrak can be combined with any of our static shelving models.



POWERTRAK

Powertrak electronic mobile shelving takes the effort out of depositing or retrieving your archived items.

Based on Rackline's time-tested Monotrak and Multitrak solutions, the units are fitted with simple to use motorised modules that take away the effort from the user. This means no handles and no manual winding.

Powertrak has all the sophisticated programmable logic controls you would expect from the latest hi-tech system, but it combines this technology with extremely simple operator controls.

In normal operation an individual simply presses 'Green for Go' and all the controls and operations are handled automatically by the Powertrak module.

MULTITRAK

Multitrak mobile racking operates on the same principle as our Monotrak solution. However Multitrak builds on it with the inclusion of multiple torque tubes and wheels. This allows for both longer bases and much higher load capacity.

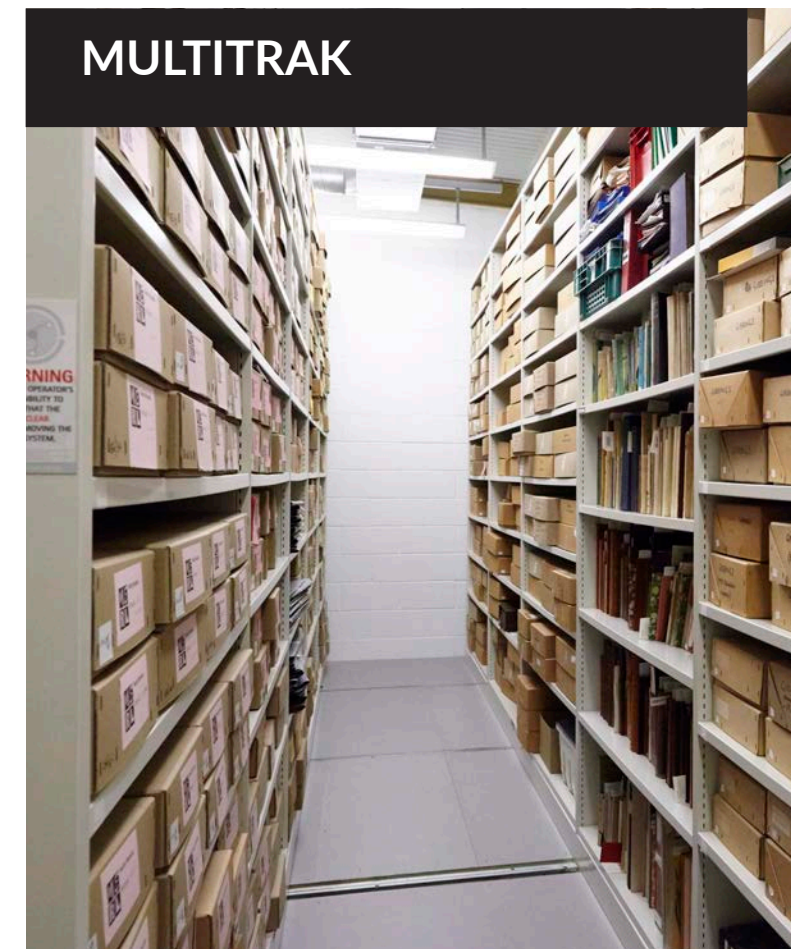
Multitrak carriages can be up to 12 metres long and can accommodate load capacities up to 15 tonnes per carriage.

Even with high weight-loads the clever design of Multitrak ensures that carriages can be moved with ease.

Multitrak is perfect for archive applications, no matter the size. The units are also ideal for buildings with uneven floors, ensuring smooth and efficient operation in any archive setting.

Multitrak tracks can be installed within 'new build' floor screeds, allowing for a flush, non-trip finish.

Simply combine Multitrak with a selection of Rackline's static shelving, drawers or any other solution you require.



SECURE STORAGE

Rackline's teams have been developing secure archive solutions since 1984. From small lockable cupboards to full cage installs, we can help you keep your valuable inventory and confidential materials safe.

All our secure solutions are tailor made to fit your needs, your inventory and space. These solutions are trusted by organisations from around the world to protect their most valuable items.

SECURE CABINETS

Rackline's secure cabinets are manufactured from steel, fitted with strong lockable doors and reinforced cases. Our secure cabinets ensure the safety of your inventory.

These flexible cabinets are ideal for storing documents, files, or valuable items within your archive.

We even offer a range of rated locks, to meet the needs of insurance companies.

Our cabinets are available in standard sizes: a 6-level version at 1836mm and a 3-level version at 996mm. However, as all our solutions are manufactured in-house, we can adjust and configure cabinets to meet your specific requirements.

SECURE CAGES

At Rackline we have the capability to build secure caged areas that keep your valuable inventory safe.

Our cages are built within our dedicated manufacturing facility and include features such as: Strong steel mesh, lockable doors and reinforced hinges.

Our secure cages are used widely within archives to restrict access and ensure valuable items are kept safe.

Talk to us about your options. We can develop and manufacture solutions to meet your requirements, and those of your insurance.

SECURE MOBILE SHELVING

Rackline's mobile systems are perfect for maximising archive space, saving up to 70% compared to regular static shelving. They do this by removing the need for an aisle between each bay, allowing shelves to be stacked together when not required.

Adding the ability to lock these units further enhances their appeal by ensuring added security.

When stacked together the mobile carriages can form a solid steel box that is perfect for protecting your archived items.

Talk to us about adding shelving, drawers or cupboards onto these units to meet the individual needs of your inventory.

INDUSTRIAL SHELVING

Rackline also manufactures and installs a range of more industrial focused shelving systems. These are suitable for larger archive areas where more weight bearing is required.

These industrial offerings consist of racking and storage products designed for use across more demanding environments. Our industrial shelves provide practical storage space for a vast range of items.



SPEEDRAX

With a wide range of size options, Rackline's Speedrax storage shelving is a cost effective option for all your storage needs.

Shelves can be easily adjusted to accommodate your changing inventory requirements, and offer unrestricted access from all sides.

Speedrax comprises of steel posts and beams supporting chipboard or steel decks. These shelves are ideal for bulky items and rated to carry up to 700KG per shelf. They are also easy to re-configure and expand.

We also supply a range of accessories to ensure a fit to your inventory,



WIDESPAN



Widespan is Rackline's name for its longspan shelving system.

Widespan features either Steel or Chipboard Shelves on spans up to 2.7 metres, supported by either open or closed end frames.

Rackline's Widespan can be easily adapted to either two-tier or high-bay installations with a wide range of beam profiles.

As Widespan has no back braces, access is possible from both faces of a single entry bay, this eliminates the need for a double entry configuration and reduces the initial cost.

Widespan is both attractive and versatile with easily adjustable shelf levels and a smooth front face.

Talk to us about configuration and accessories to fit your needs.



TAILORED SOLUTIONS

One of the biggest advantages of partnering with Rackline is the ability of our teams to develop, not just solutions, but the right solutions for your individual needs.

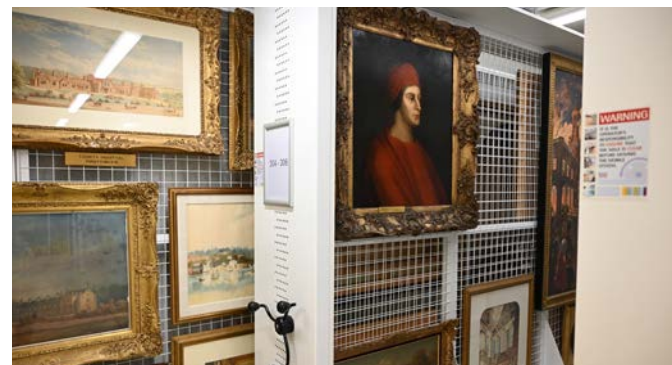
Our teams can help you maximise available space and provide custom touches to precisely fit your archive items. With a dedicated design team we support you through the full process from initial space planning, design, manufacturing and installation.

Our skilled manufacturing team in Stoke-on-Trent can accurately manufacture the solutions you need, to maximise your space and keep your items secure.

SPECIALIST STORAGE AND DISPLAYS

Rackline are the specialists in truly bespoke design and manufacture. No matter what your requirement we can develop solutions to fit your space and your items.

The Rackline design team transforms empty spaces into efficient archive storage areas and bring your ideas to life. Whether you need a single secure cabinet for documents, a secure area for a particular collection, or a full multi-area archive fit-out, we can help you to make the most of your space and keep even your most unusual archive items secure.



The logo for Rackline Storage Systems. The word "RACKLINE" is written in a bold, sans-serif font, with each letter contained within its own white square. Below this, the words "STORAGE SYSTEMS" are written in a smaller, all-caps, sans-serif font. To the left of the word "STORAGE" is a small icon of a three-pronged electrical plug.

RACKLINE STORAGE SYSTEMS

Rackline are the experts in the manufacture of specialised storage systems, supporting organisations worldwide in the safe storage and protection of their valuable items.

Get in touch today for a free no obligation site survey, layout drawings and quotation.

Rackline Limited,
Oaktree Lane, Talke,
Staffordshire ST7 1RX

W: www.rackline.com
E: now@rackline.co.uk
T: 01782 770 144